



2630-2655 MHz Antenna for S-DMB Applications

Features

- Quadrifilar Helical Antenna (QHA) Technology
- Right Hand Circular Polarization
- Gain +4.6 dBic RHCP Peak

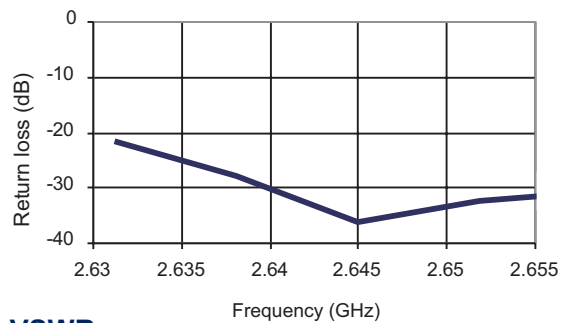
Electrical Specifications

Frequency Range	2630 – 2655 MHz
Gain	+4.6 dBic RHCP peak
VSWR	<1.5:1 across band
Polarization	RHCP
Elevation Pattern	45° » 2dBic RHCP
Feed Impedance	50 Ohms

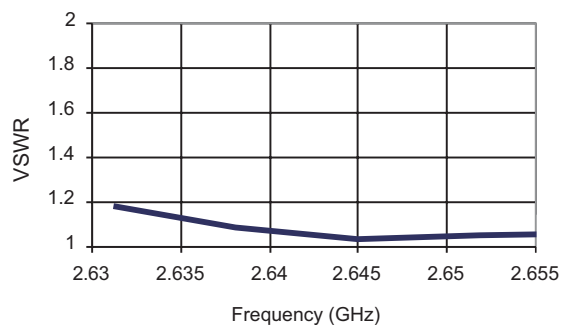
Mechanical Specifications

Size	68 L x 12 diameter mm
	1.77 L x 0.59 diameter inches
Weight	4.7 g (weight includes connector)

Return Loss



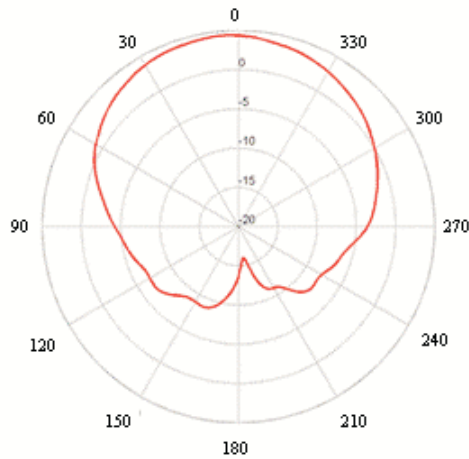
VSWR



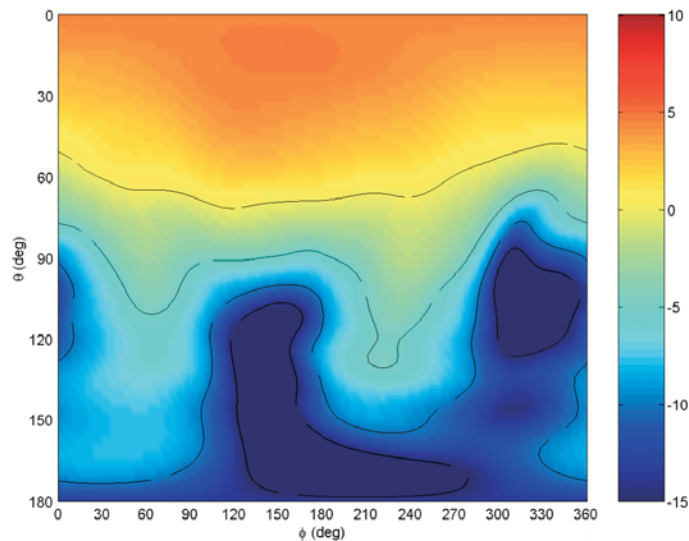
Results may vary depending on the particular implementation.

Frequency (MHz)	Gain (dBic RHCP)		Axial Ratio (dBic RHCP)		Standing Wave Ratio (SWR)
	Zenith	45 Degree Elevation	Zenith	45 Degree Elevation	
2630	4.0	1.8	0.3	2.1	1.20
2635	4.1	1.9	0.4	2.2	1.13
2640	4.3	2.1	0.5	2.4	1.06
2645	4.5	2.4	0.6	2.6	1.03
2650	4.6	2.5	0.7	2.8	1.04
2655	4.7	2.6	0.8	3.0	1.05

Typical Gain Pattern at at 2640 MHz



Spherical Gain Contour Map at 2640 MHz



www.skycross.com

SkyCross has many offices worldwide. Visit us online to find an office near you.

