



## 1575 MHz Antenna for GPS Applications

### Features

- Quadrifilar Helical Antenna (QHA) Technology
- Right Hand Circular Polarization
- Gain +2.2 dBic RHCP at 1575 MHz

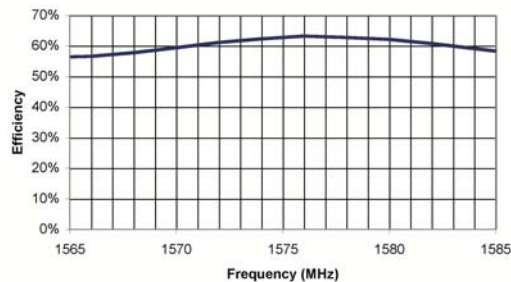
### Electrical Specifications

Frequency Range	1565 – 1585 MHz
Gain	+2.2 dBic RHCP at 1575 MHz
VSWR	<2.0:1 across band
Polarization	RHCP
Elevation Pattern	45° » 2 dBic RHCP
Feed Impedance	50 Ohms

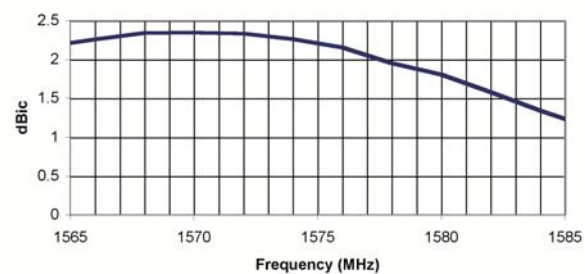
### Mechanical Specifications

Size	45 L x 15 diameter mm
	1.77 L x 0.59 diameter inches
Weight	3.6 g (weight includes cable and connector)

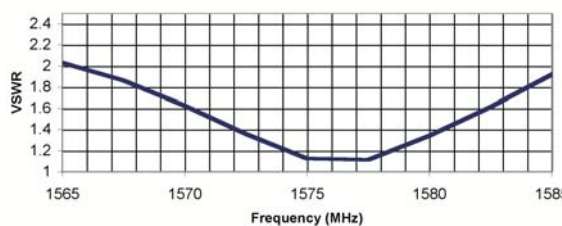
### Swept Efficiency



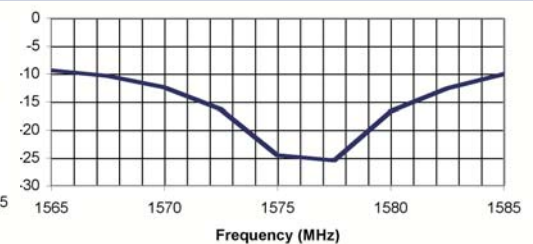
### Swept Gain



### VSWR

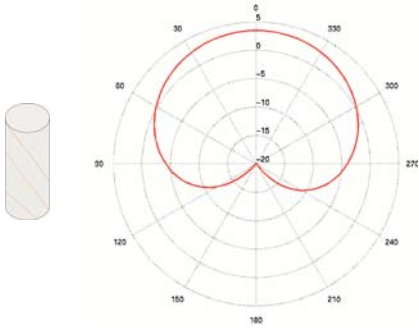


### Return Loss

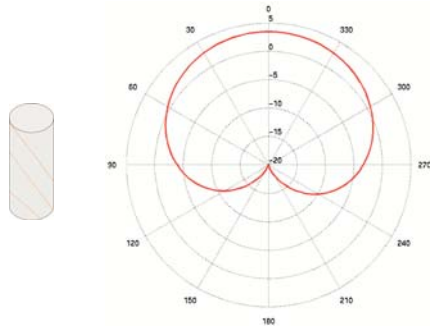


Results may vary depending on the particular implementation.

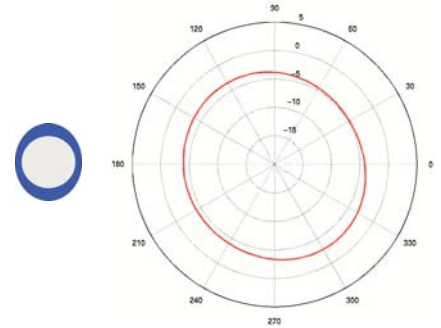
**Elevation Cut** **Phi=0 Degrees**



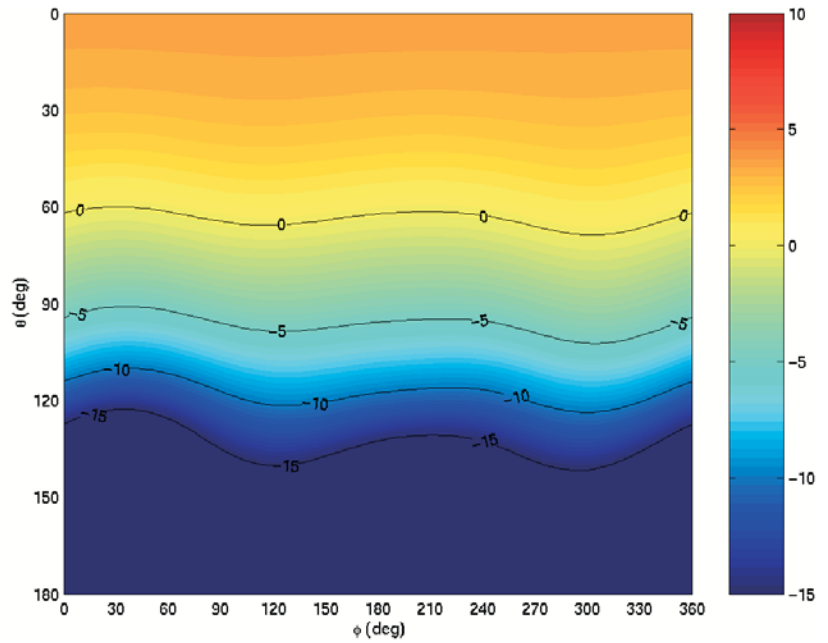
**Elevation Cut** **Phi=90 Degrees**



**Azimuth Cut** **Theta=90 Degrees**



**Spherical Gain Contour Map at 1575 MHz**



[www.skycross.com](http://www.skycross.com)

SkyCross has many offices worldwide.  
Visit us online to find an office near you.

