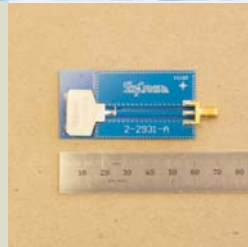


SMT-2TO6M
Antenna element

SMT-2TO6MB-A
Assembly including antenna element, PCB
and female SMA connector as shown



2.3-5.9 GHz Ultra-Wideband Antenna

Features

- Highest efficiency for given size and bandwidth
- >5 bands in a single antenna including WiMAX and WLAN
- Common materials and simple fabrication techniques

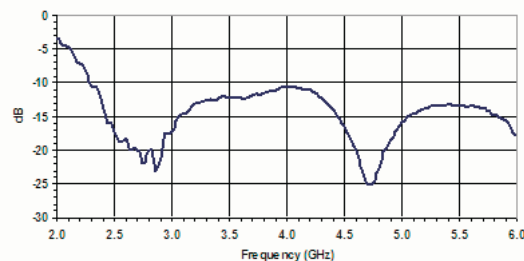
Electrical Specifications

Frequency Range	2.3-5.9 GHz
Gain	>0.7 dBi peak across 2.3-5.9 GHz
VSWR	<2.0:1 across 2.3-5.9 GHz
Polarization	Linear
Radiation Pattern	Azimuth Omni-directional
Feed Impedance	50 Ohms Unbalanced

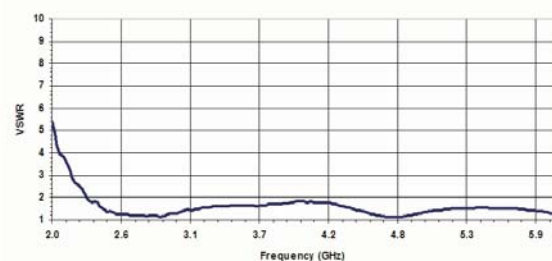
Mechanical Specifications

Antenna Element	0.67 x 0.79 x 0.12 in 17.0 x 20.0 x 3.0 mm
Assembly PCB	2.362 x 1.181 x .04 in 60.0 x 30.0 x 1.0 mm
Area of PCB that is Ground	1.173 x 1.181 in 44.0 x 30.0 mm
Antenna Element Weight	0.5 g

Return Loss

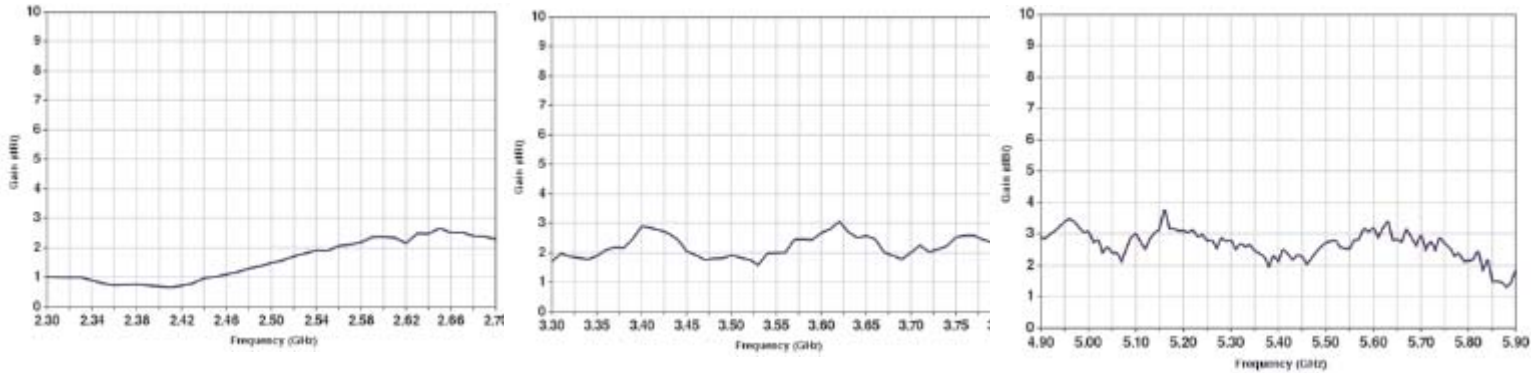


VSWR

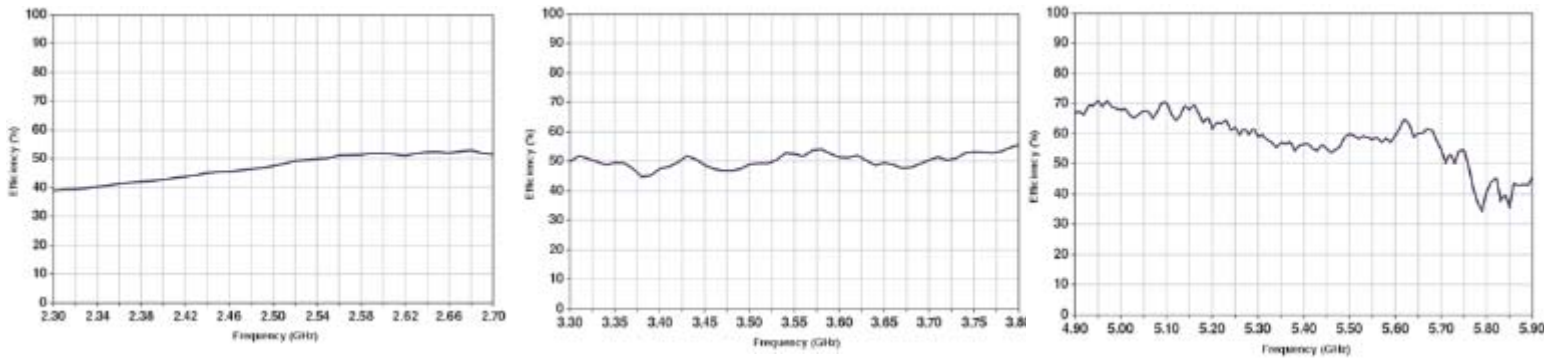


All antenna measurements are taken in free space. Results may vary depending on the particular implementation.

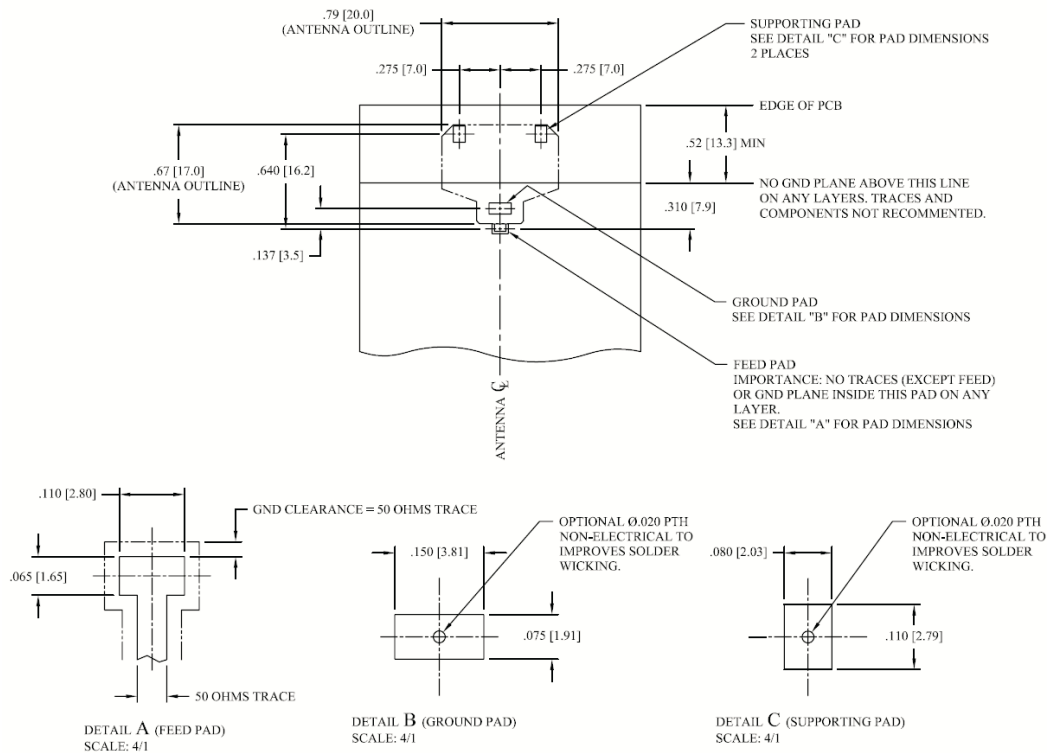
Peak Gain



Efficiency

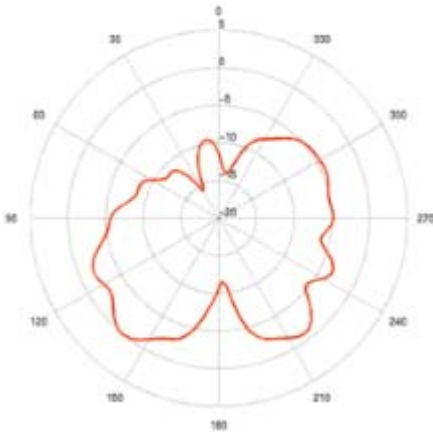


Footprint

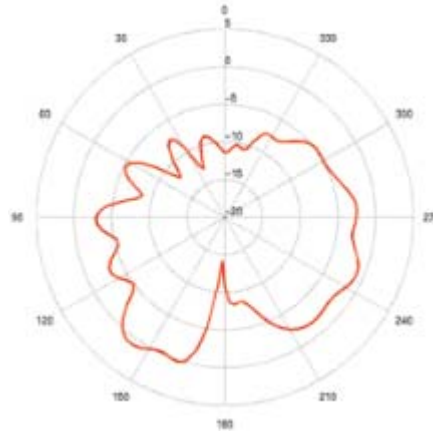


Diagrams Below are at 2.3 GHz

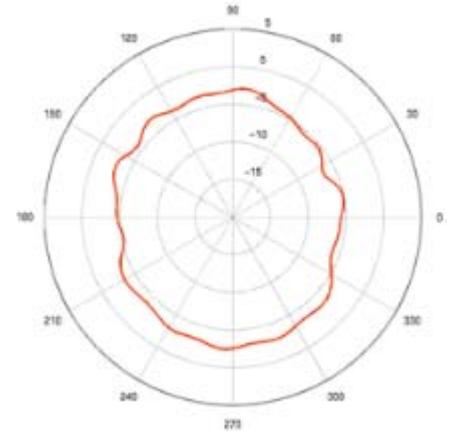
Elevation Cut **Phi=0 Degrees**



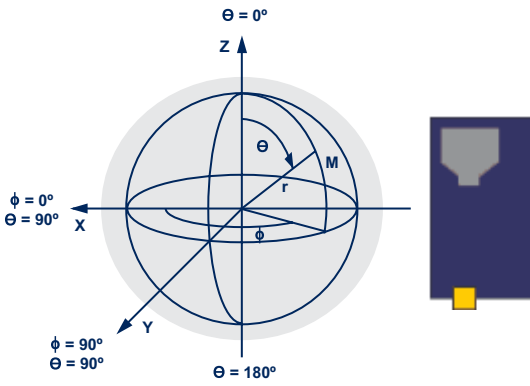
Elevation Cut **Phi=90 Degrees**



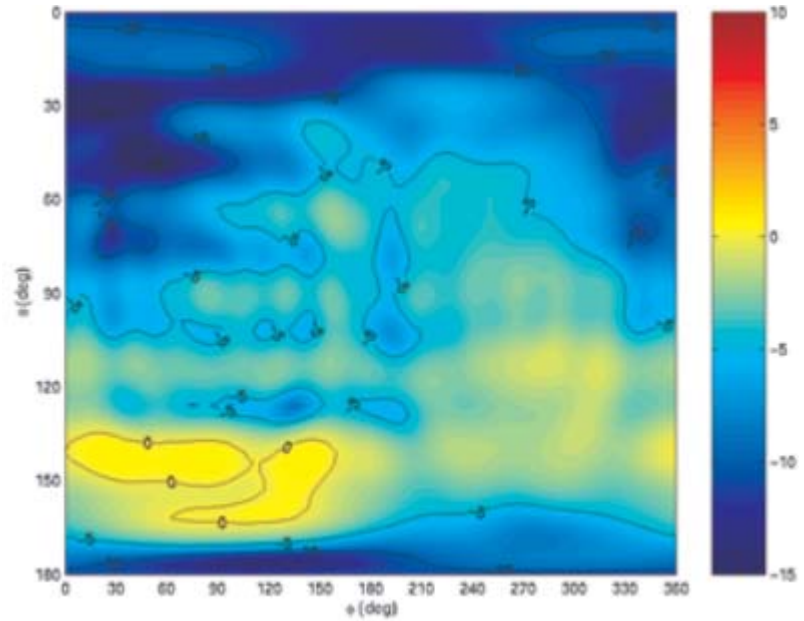
Azimuth Cut **Theta=90 Degrees**



Orientation

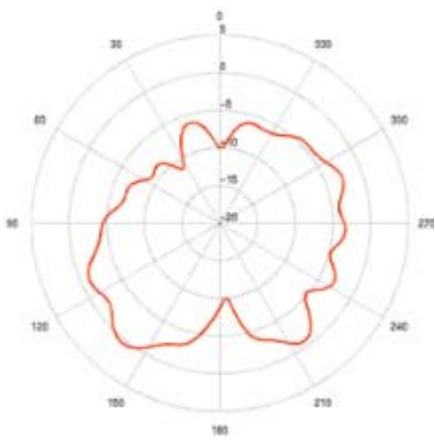


Spherical Gain Contour Map at 2.3 GHz

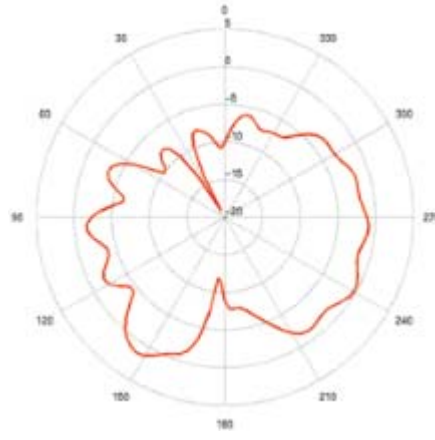


Diagrams Below are at 2.5 GHz

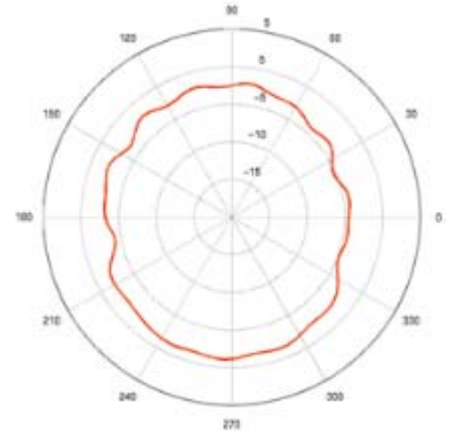
Elevation Cut **Phi=0 Degrees**



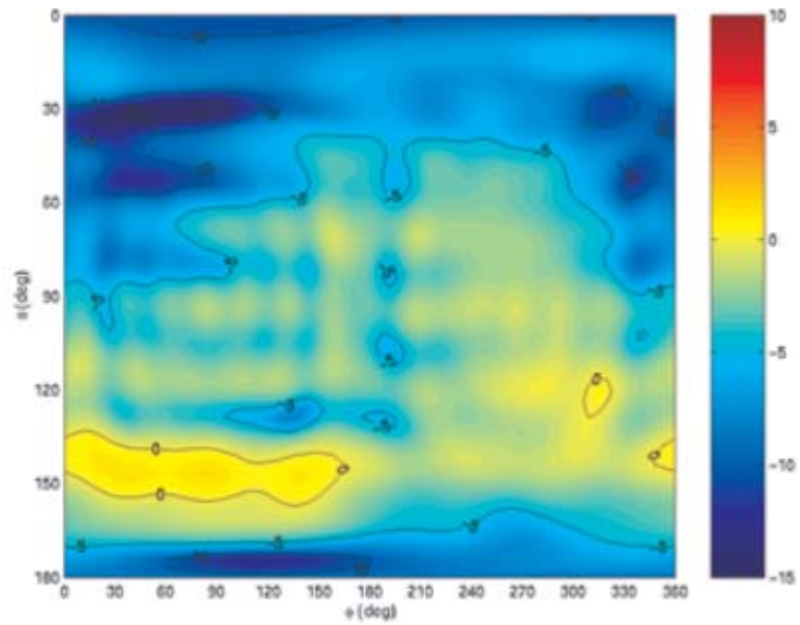
Elevation Cut **Phi=90 Degrees**



Azimuth Cut **Theta=90 Degrees**

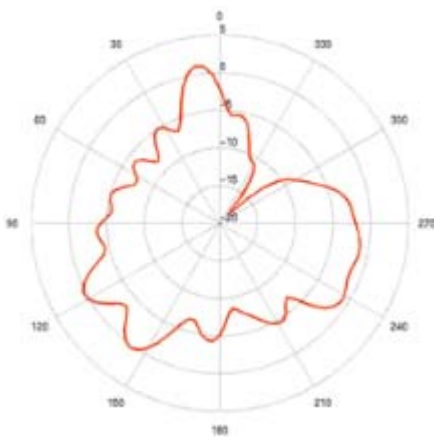


Spherical Gain Contour Map at 2.5 GHz

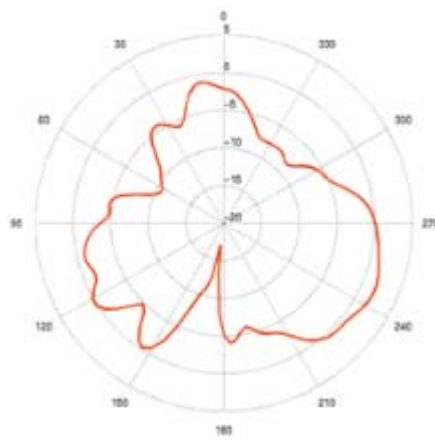


Diagrams Below are at 3.55 GHz

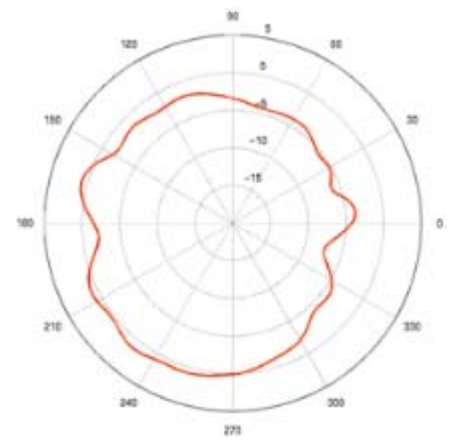
Elevation Cut **Phi=0 Degrees**



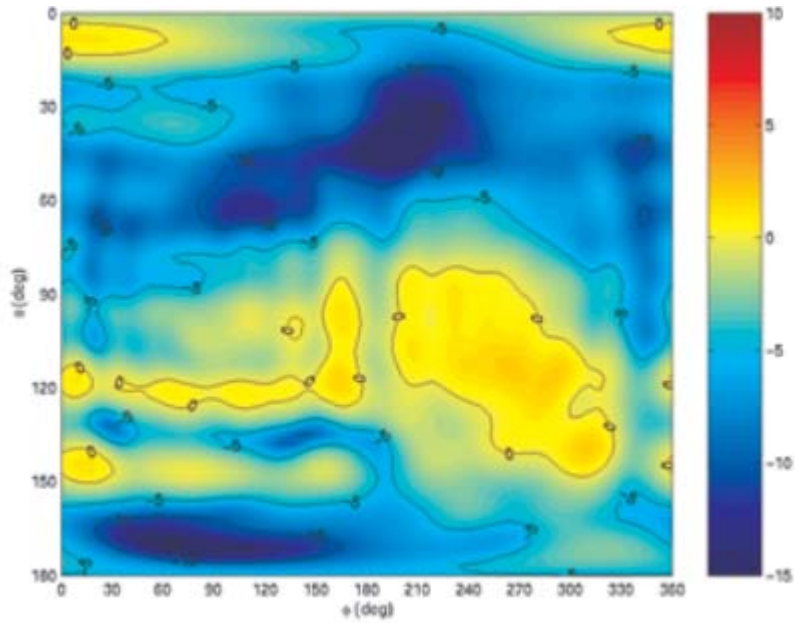
Elevation Cut **Phi=90 Degrees**



Azimuth Cut **Theta=90 Degrees**

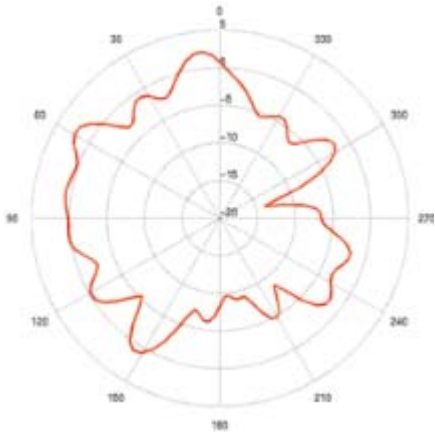


Spherical Gain Contour Map at 3.55 GHz

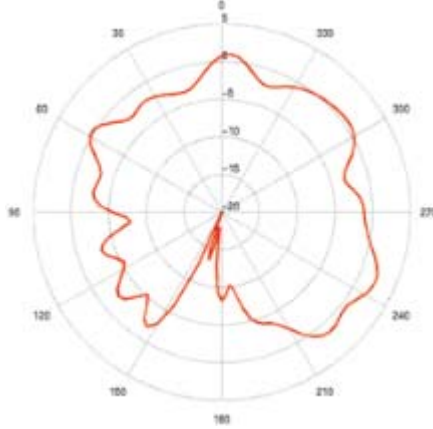


Diagrams Below are at 4.9 GHz

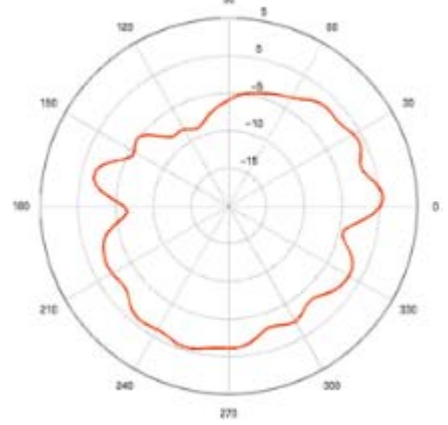
Elevation Cut **Phi=0 Degrees**



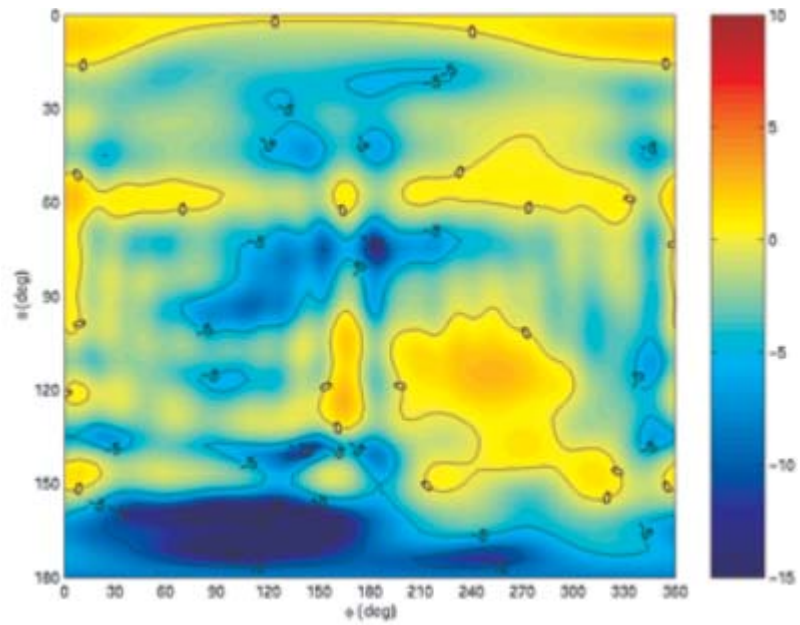
Elevation Cut **Phi=90 Degrees**



Azimuth Cut **Theta=90 Degrees**

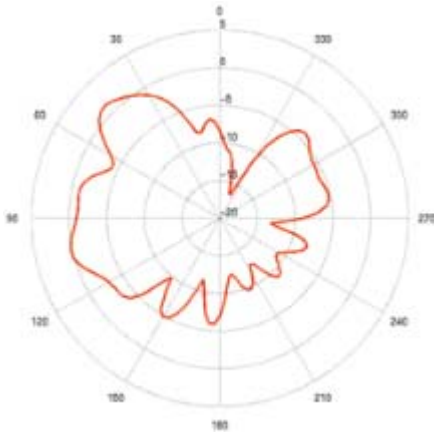


Spherical Gain Contour Map at 4.9 GHz

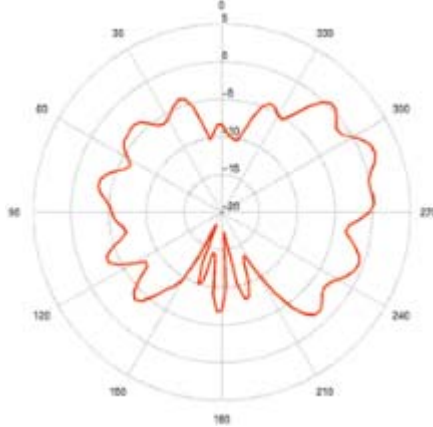


Diagrams Below are at 5.9 GHz

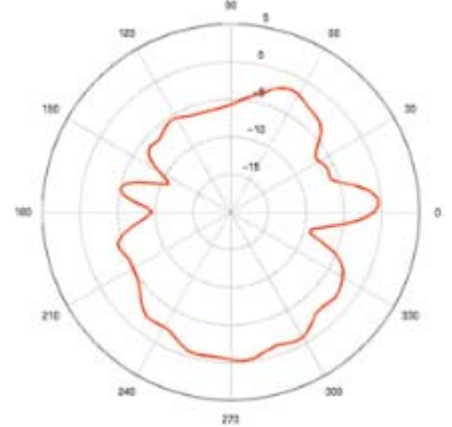
Elevation Cut **Phi=0 Degrees**



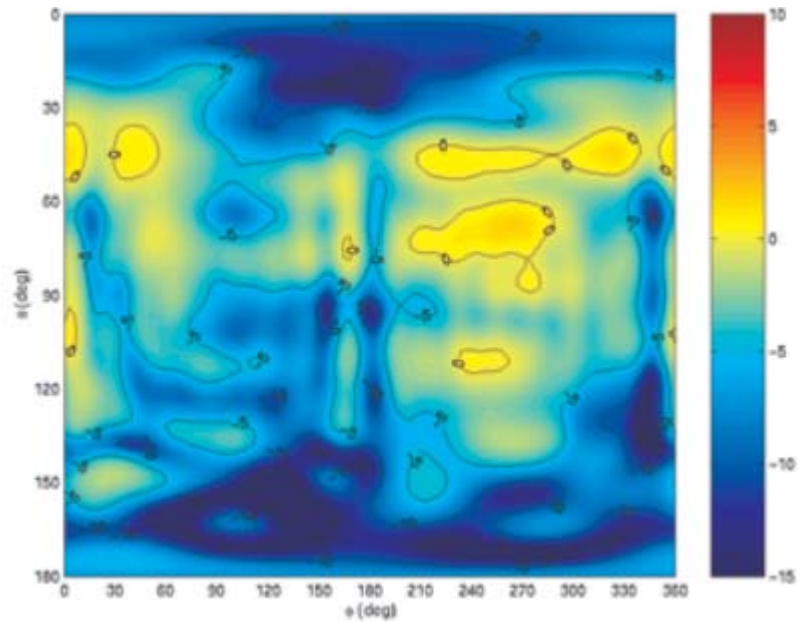
Elevation Cut **Phi=90 Degrees**



Azimuth Cut **Theta=90 Degrees**



Spherical Gain Contour Map at 5.9 GHz



www.skycross.com

SkyCross has many offices worldwide.
Visit us online to find an office near you.

